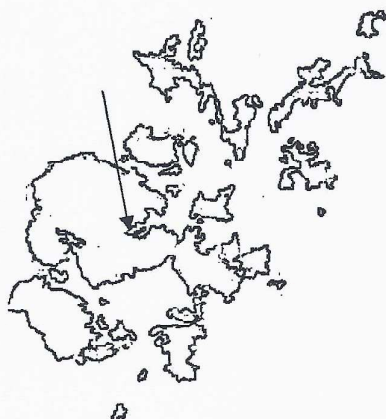


## FINSTOWN (Mainland)



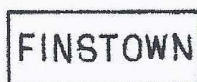
The post town of Kirkwall and the sub office of Stromness constituted the only post office on Mainland until the mid-1840s, when receiving houses were established in the parish of Evie and the village of Finstown, both late in 1844. Finstown, or Phinstown, was named after an Irish drummer named Phin who settled there in the eighteenth century. J. R. Henderson states that the old form of the name was Feristown and 'Scottish Stamp News' has taken this a stage farther and states that postmarks were thus inscribed. The fact is, however, that Feristown was never used in Orkney, far less in postmark form. These receiving houses were given large double-arc name stamps with lettering in large seriffed capitals (<168>).



168

About 1849 receiving offices were opened in the parishes of Orphir, Birsay and Harray and on this occasion smaller undated double-arc stamps, with the names in sans serif lettering, were issued. All of these small sub offices were

located in West Mainland, but East Mainland was also served in 1856 and 1857 when offices were opened in the parishes of St Mary's Holm and Deerness respectively. St Mary's Holm was given a boxed name stamp and this type was also used at Evie and Finstown (<169>) in place of the original very clumsy stamps.



169

Finstown was on the route of the mounted post between Kirkwall and Stromness and from it radiated rural posts to Harray (northwest) and Evie (due north). A thrice-weekly post ran direct from Kirkwall southwest to Orphir and separate foot posts from Kirkwall ran every other day to Deerness and St. Mary's Holm. After the cessation of the Huna-Burwick ferry as a post route in 1856, the mails from Burray and South Ronaldsay were carried by the St Mary's Holm runner from Kirkwall as far as Holm Sound. The runner from Finstown to Evie also carried the mails destined for the island of Rousay. In the same year (1868) the Kirkwall-Deerness post was extended northwards through the Deerness peninsula and the runner got an increase in wages. In 1870 the foot post from Finstown to Harray was increased in frequency and two years later the post to Evie was similarly increased. The relative importance of Finstown is reflected in the issue of a 'thimble' datestamp inscribed FINSTOWN S.O. (<172>) in June 1872.



172

At this time none of the other sub offices had a postmark of any kind, since the 'Scots Local'

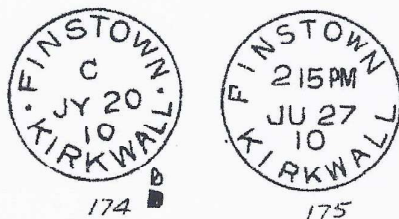
name stamps were withdrawn in 1860. Finstown also received a numeral obliterator with the figures 152 - originally allocated to Finhaven but dormant for some years. The obliterator was of the 3-3-3 pattern of bars and two different stamps were employed. The original version had a curved foot to the '2' (<170>) and was issued in 1872, but a replacement stamp, issued in 1882, had a flat-footed '2' (<171>).



The single-circle datestamp was given a new case in November 1894, omitting the letters (<173>)



but there is no record of a skeleton having been employed in the interim. In 1873 and again in 1874 the foot posts from Finstown to Evie and onward to Rousay were accelerated and increased in frequency, until it became a daily service.



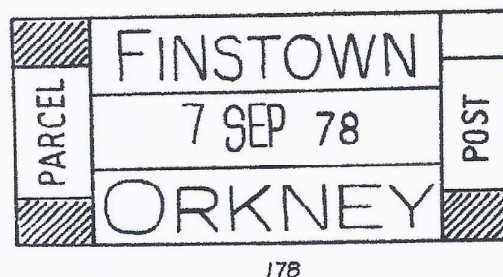
A general issue of double-circle stamps was made to the more important sub post offices in November 1934 with the head office name alongside the sub office round the top and Orkney round the foot. Finstown got (<176>).



The general issue of stamps in 1962 supplied Finstown with (<177>).



Finstown has used the rectangular parcel datestamp (<178>)



<http://www.orkneycommunities.co.uk/imagelibrary/picture/number705.asp> ;



New petrol pumps at Finstown PO (Wood's shop)

Date estimated.

As well as being the Finstown Telegraph Office, Wood's shop also seems to have sold cycles and motors.

There seems to have been a few clerks of works in attendance at this job!



Where was this? To me it looks like where Mrs Linklaters PO is now, but I know that it has moved about a bit since then.



Where did all the bikes come from and where did they go. All in front of the Post Office. Most of the buildings are still there, all well built. 1905

Finstown Post Office closed on 20<sup>th</sup> February 2015 when the postmistress Ann Linklater retired. The Post Office couldn't find another business to take over the post office work. ( Jimmy Anderson; The Scottish Post, No 148, winter 2016)

## Finstown Post Office to reopen



The Post Office is reopening its Finstown branch more than two years since it closed due to retirement.

It will be at the same location — Grinnabrek — and will be open on Thursday, Friday and Saturday, from 9am to 12.30pm, although a date for the reopening has still to be confirmed.

The facility closed February 2015 when the postmaster at the time, Ann Linklater, retired.

Speaking this week Kenny Lamont, network operations area manager, said: "We are making it easier for customers to get their cash, send and collect their mail and do their banking because we know how important these services are to local residents.

He added: "We are confident that this Post Office at the heart of the local community will meet customer needs."

The Orcadian 4.4.17

## Post office reopens



Last week, June 8, saw a new era begin for the Finstown post office, as it re-opened its doors to the public.

The post office closed more than two years ago, due to retirement. The service was re-launched at 11am on Thursday, under new owners Mark and Sue Kirkbride.

To mark the occasion, a special ribbon-cutting ceremony was held, with P6 and P7 pupils from Firth Primary School. Pictured are Finn Aberdein, Louise Stacey, Erin Brown, Millie Flett, Mark Kirkbride (owner), Alastair Taylor and Drew Dennison.

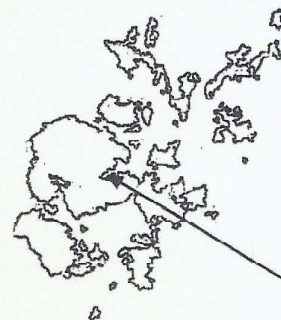


# ORKNEY ISLANDS POSTAL HISTORY

## FINSTOWN

Receiving house was established in the village of Finstown, late in 1844. Finstown, or Phinstown, was named after an Irish drummer named Phin who settled there in the eighteenth century

PC of Finstown, B.6257 from Dounby to Paisley on August 10<sup>th</sup> 1953 with Dounby JMK 157 although Dounby had got a replacement marker in 1940. SG 506 used 1 ½ year after the death of King George VI.



These receiving houses were given large double-arc name stamps with lettering in large seriffed capitals, JMK 168 for Finstown. Here used on letter to Charlestown, Dunfermline on December 9<sup>th</sup> 1852 along with red Kirkwall JMK 15. Dunfermline double arvh and receiving marker December 13<sup>th</sup> 1852 without placename on reverse. Stamp SG 8 cancelled with Kirkwall JMK 12.





FINSTOWN

Finstown JMK 168 in green used on pre-printed summon for meeting of parochial board. Reception mark of Kirkwall JMK 15 on November 23<sup>rd</sup> 1850, introduced a few months earlier, but here with day - month instead of normal month - day. Red ms 1(d) for single letter.

Parochial School  
of Firth and Stenness,  
23<sup>rd</sup> Nov 1850

Sir

I give you notice that a meeting of the Parochial Board of Firth will be held here on *Wednesday* the *4<sup>th</sup>* day of *Dec<sup>r</sup>* next at 12 o'Clock noon. You are particularly requested to attend this meeting.

I am,

Sir,

Your mo. ob. Servant,

*John Sinclair*  
*Inspector*



23 Nov 1850

*John Sinclair*

*calling Meeting of*

*P. B. of Firth*

*Kirkwall*

*Young*

*3602 1850*



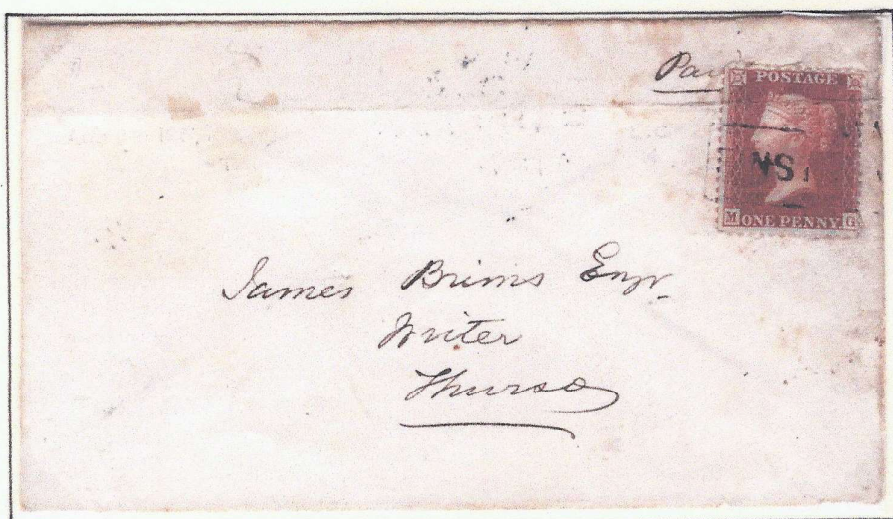
# ORKNEY ISLANDS POSTAL HISTORY

## FINSTOWN

Letter from Wyre to Edinburgh  
April 6<sup>th</sup> 1848 with Finstown JMK  
168 on reverse. Kirkwall JMK 12 on  
SG 8 and Kirkwall JMK 11 on  
reverse with receiving stamp from  
Edinburgh.



## FINSTOWN

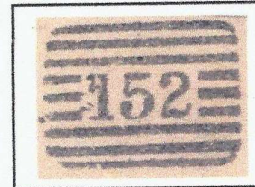
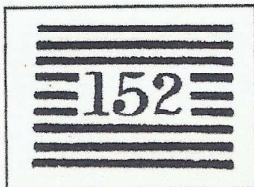


Letter from Fins-  
town to Thurso  
August 10<sup>th</sup> 1857  
with boxed local  
cancellation JMK  
169, type VIII,  
issued in 1857 on  
SG40 (L.C.14). Ms  
"Paid" under  
stamp. Thurso  
double arc on  
reverse. JMK 169  
was in use until  
1860.

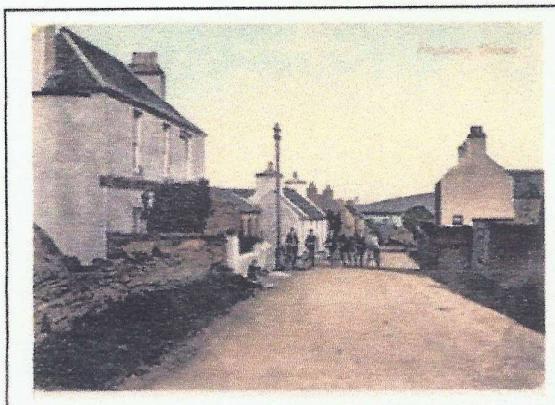


# FINSTOWN

Finstown received a numeral obliterator with the figures 152 - originally allocated to Finhaven but dormant for some years. The obliterator was of the 3-3-3 pattern of bars and two different stamps were employed. The original version had a curved foot to the '2', JMK 170 and was issued in 1872, but a replacement stamp, issued in 1882, had a flat-footed '2', JMK 171.



However, a third numeral obliterator of an unusual design, with rounded corners, seems to have existed. Since the foot of "2" is curved it is here called JMK 170b. Seen here on cut of PC from September 5<sup>th</sup> 1899 along JMK 173, litra A.



The runner from Finstown to Evie also carried the mails destined for the island of Rousay ( and hence for Wyre (Veira)). This envelope from Kirkwall to Rousay on October 25<sup>th</sup> 1901 has JMK 170b on SG 172 on front and Finstown JMK 173 with dot as litra and Evie JMK 163 on reverse.

Where did all the bikes come from and where did they go. All in front of the Post Office. Most of the buildings are still there, all well built. 1905 photo  
<http://www.orkneycommunities.co.uk/imagelibrary/>



# ORKNEY ISLANDS POSTAL HISTORY

## FINSTOWN

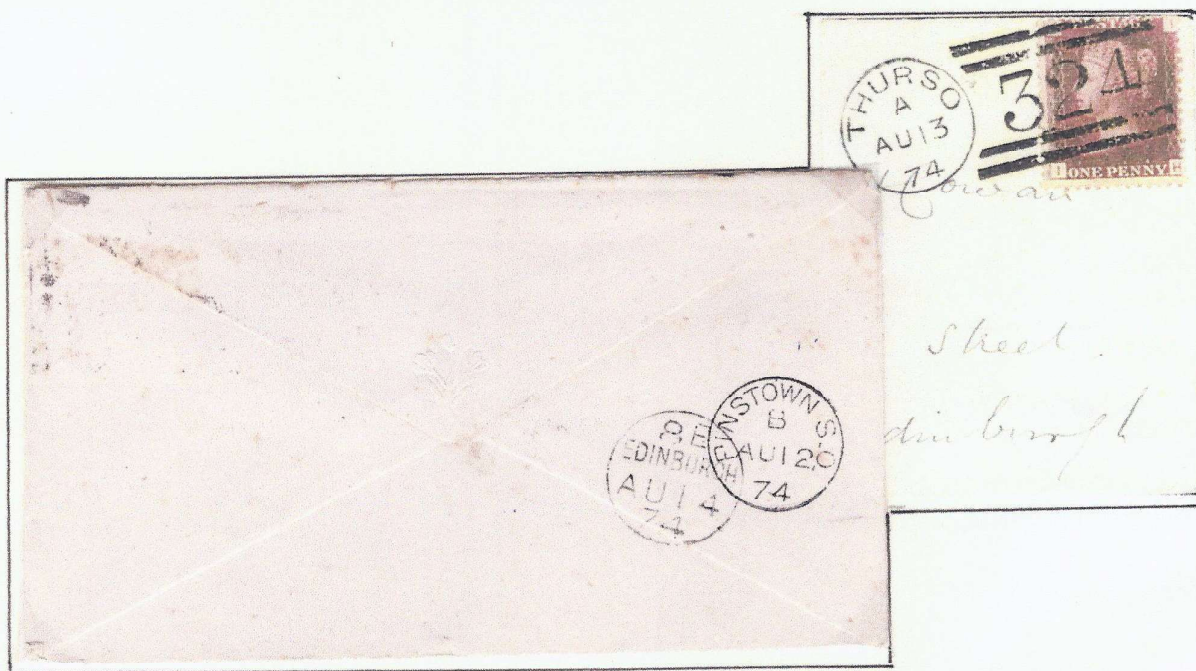
Finstown was issued a thimble datestamp inscribed FINSTOWN S.O. in June 1872, JMK 172. At this time none of the other sub offices had a postmark of any kind since the "Scots Local" name stamps had been withdrawn in 1860.



Here JMK 172 is used on reverse of letter from Brisbane, Queensland, Australia to Harray. The Harray sub office had been closed in 1873 and a wall box substituted. It re-opened in 1887. Sent from Brisbane on September 8<sup>th</sup> 1879, it passes Finstown on November 10<sup>th</sup> 1879. Brisbane markers on 6 d Queen Victoria of 1860.



Letter for Edinburgh showing JMK 172 of Finstown from August 12th 1874 on reverse along receiver marker 8E / EDINBURGH / AU 14 / 74. On front 324 of Thurso on the One Penny Victoria.

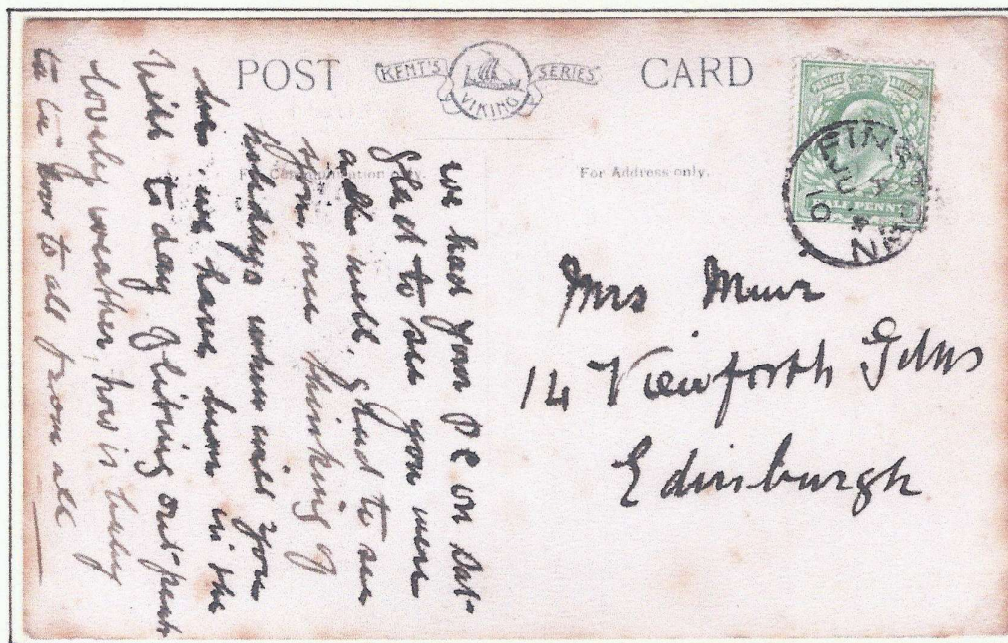




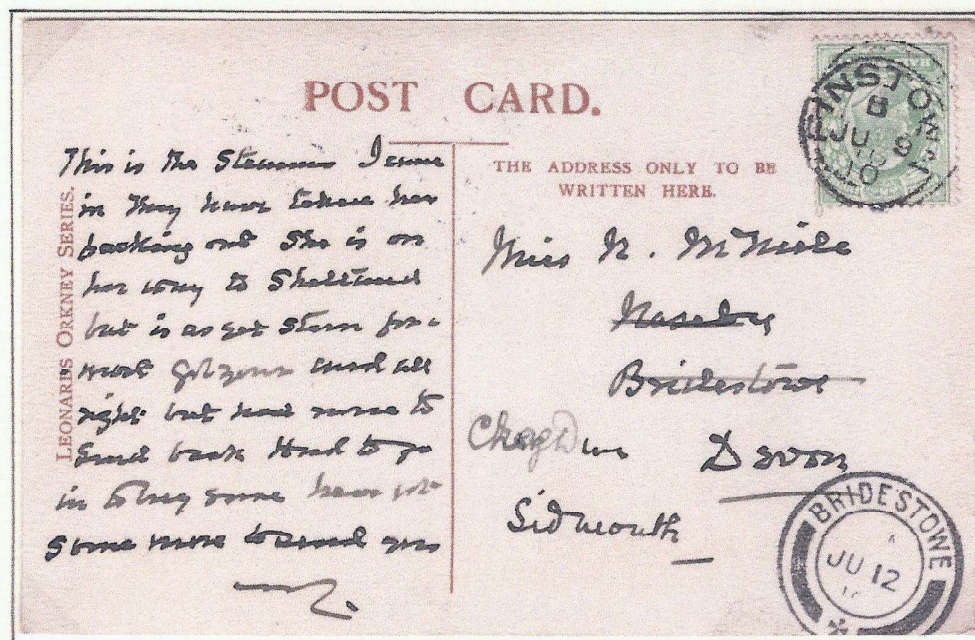
# ORKNEY ISLANDS POSTAL HISTORY

## FINSTOWN

The single circle datestamp JMK 172 from 1872 was given a new case in November 1894 and the letters S.O. were omitted. It now appears as JMK 173.



Here JMK 173 with litra A is shown on June 14<sup>th</sup> 1910 on PC to Edinburgh on SG 217 and with litra B on June 9<sup>th</sup> 1910 to Bridestowe, redirected on June 12<sup>th</sup> to Sidmouth.

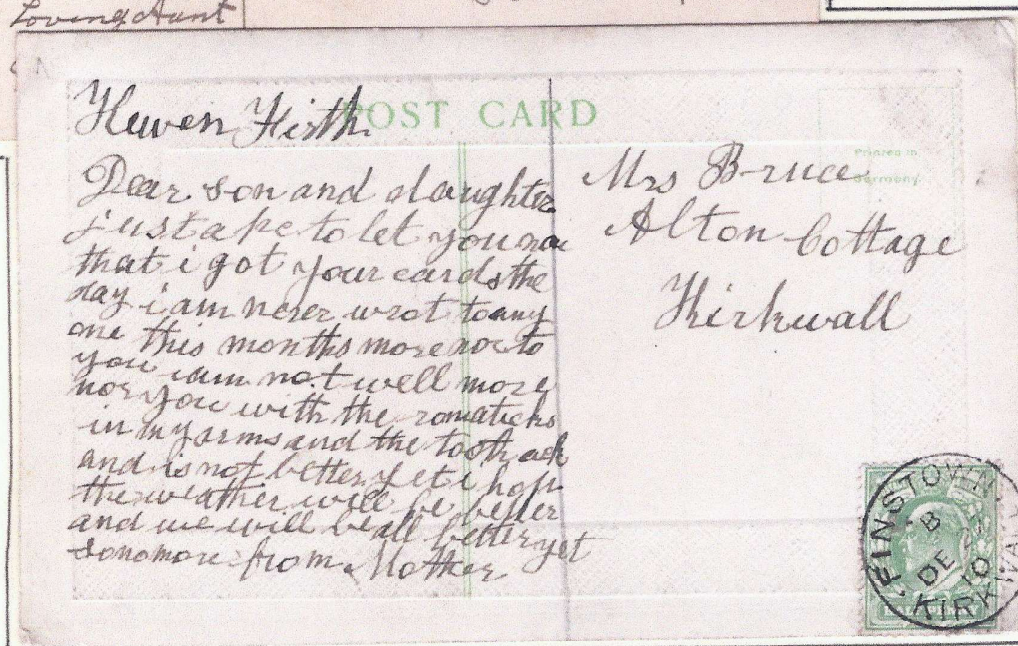
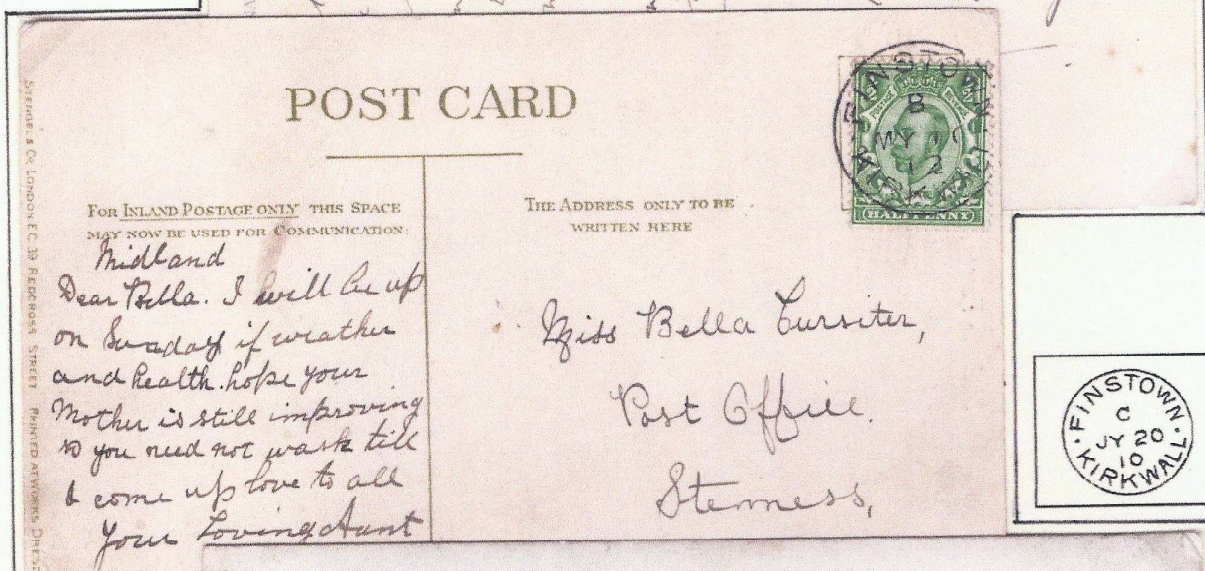
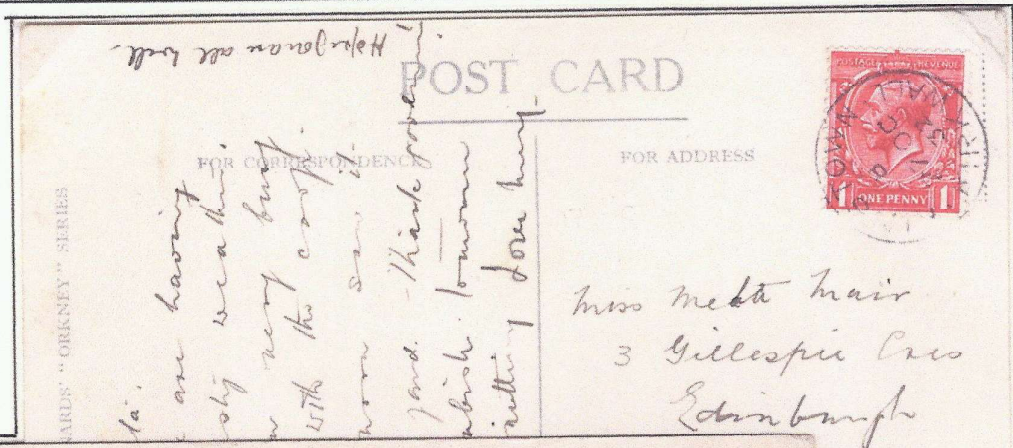




# ORKNEY ISLANDS POSTAL HISTORY

## FINSTOWN

The single circle marker JMK 174 with dots between place names · FINSTOWN · KIRKWALL was introduced in 1910 but seems to have changed from month – day to day – month sometimes prior to 1932. Here with litra B on PC to Edinburgh on 27<sup>th</sup> October 1932 on SG 440, with litra B on PC to Post Office at Stenness on May 12<sup>th</sup> 1912 at SG 339 and on PC to Kirkwall with litra B on December 22<sup>nd</sup> 1910 at SG 217.

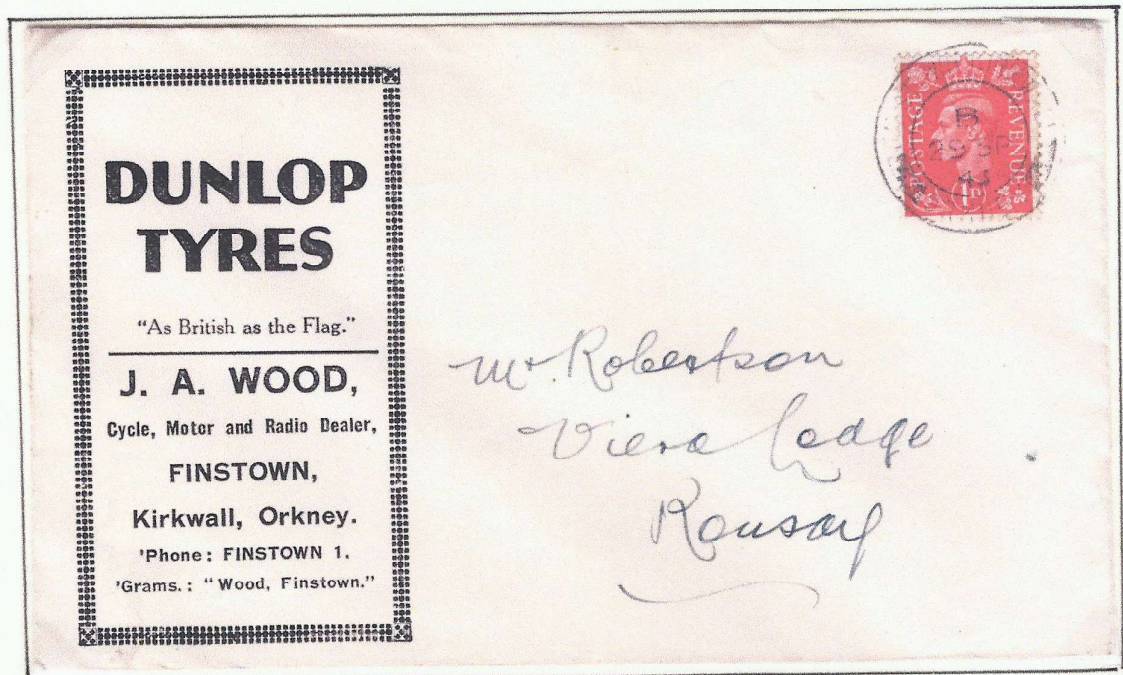




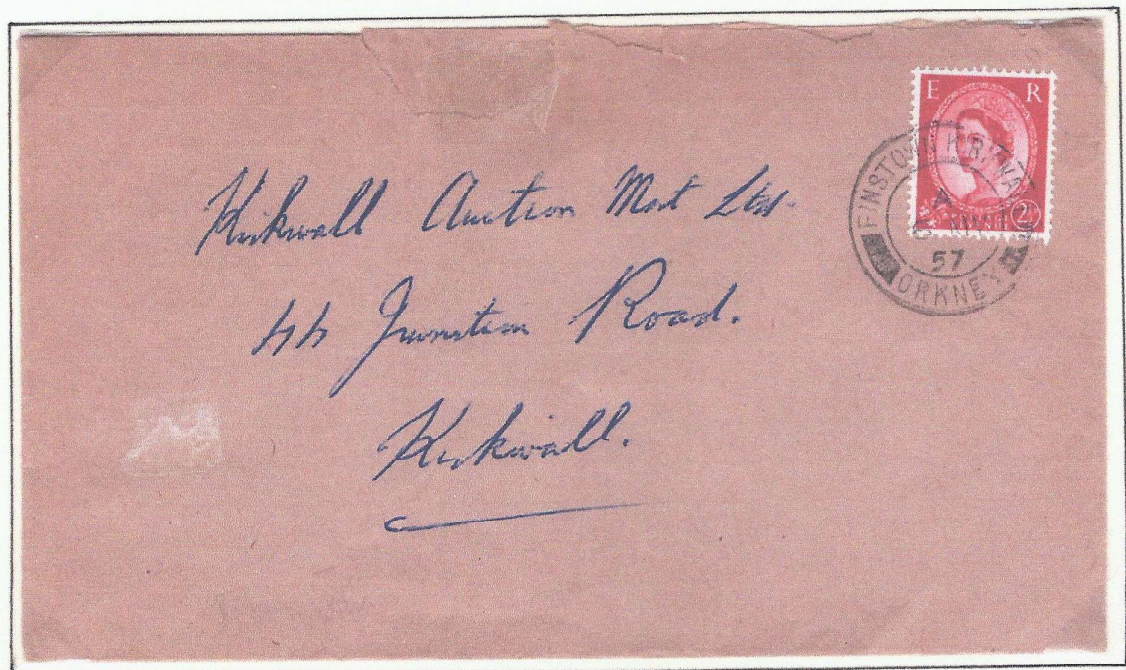
ORKNEY ISLANDS POSTAL HISTORY

FINSTOWN

Local pre-printed envelope from Finstown to Rousay (and on to Wyre) September 29<sup>th</sup> 1943 with the double arced JMK  
176. litra B. on SG 486



JHMK 176 was introduced in November 1934 and continued until early 1962. Here from May 6<sup>th</sup> 1957 with litra A on letter to Kirkwall on SG 519.

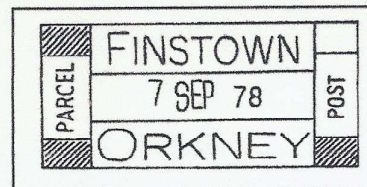
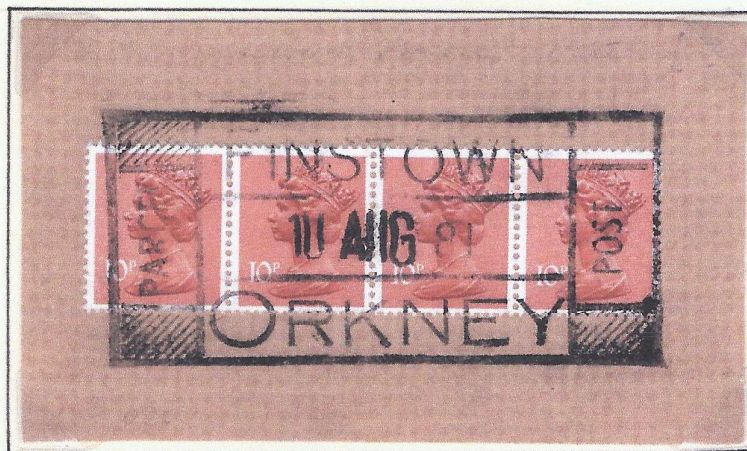
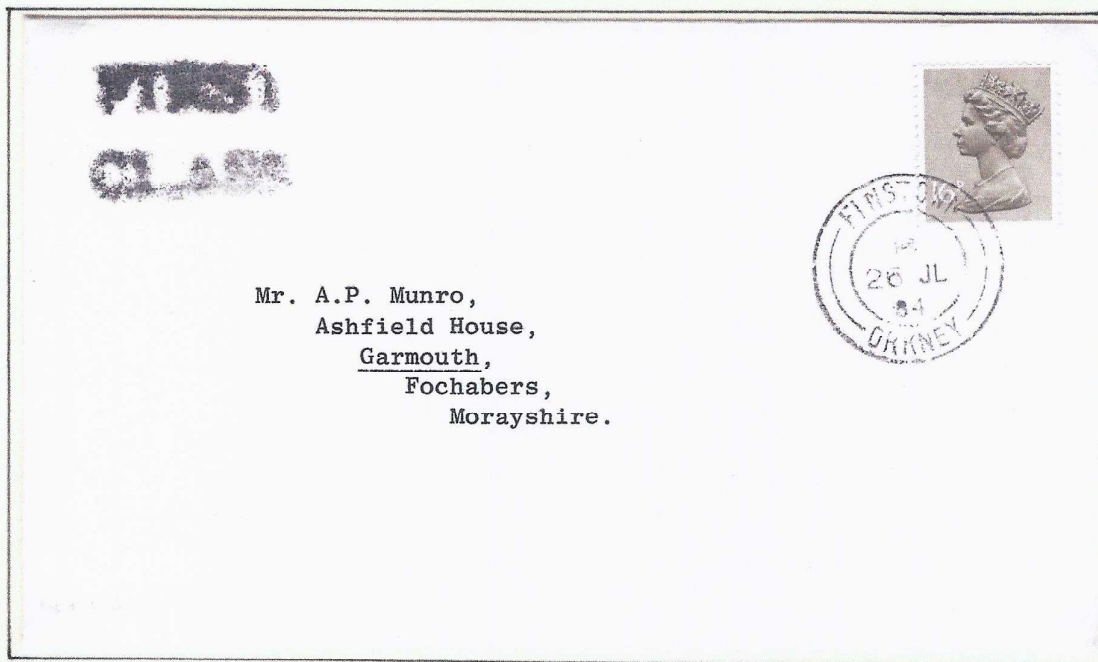




# ORKNEY ISLANDS POSTAL HISTORY

## FINSTOWN

Finstown received the general double circle stamp in 1962, JMK 177. Here used with litra B on letter to Fochabers in Morayshire on July 26<sup>th</sup> 1984 on 16 p SG X908. Unclear imprint of FIRST / CLASS probably privately applied.



Little is known of the parcel stamps of the mainland sub post offices. Here rectangular stamp of Finstown as used in 1981, JMK 178.

New petrol pumps at Finstown PO (Wood's shop) ca. 1924